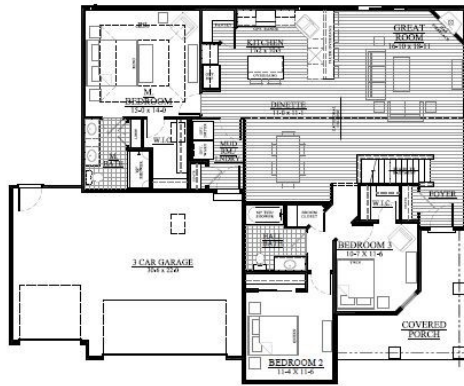


Tyranena Point - Lot 20
1550 Mud Lake Road, Lake Mills, WI 53551



FIRST FLOOR LAYOUT

JOB #21TP20
1,702 Square Feet

\$419,900

Ready in October!

Listing Agent:

Stephanie Will

stephanie@looshomes.com

(608)512-3638

*We welcome other Realtors -
2.4% Realtor Co-broke*



435 Village Walk Lane
Johnson Creek, Wisconsin 53038

Office: 920-699-3787
Office Fax: 920-699-7202

Experience a custom home in a desirable location! This beautiful split bedroom ranch home is nestled in the NEW Tyranena Point subdivision in Lake Mills close to the bike trail and beach! The main floor features an open concept floor plan with cathedral ceilings in the kitchen & great room with a tray ceiling in the spacious master suite. You will find a gorgeous focal point when entering the great room with a beautiful stacked stone corner fireplace. The kitchen has rich umber cabinets accented by upgraded quartz countertops. An egress window in the full unfinished basement makes this the perfect location for future expansion. This home has a wonderful wrap around front porch with stone accents to add to the charm and curb appeal of this ideal Stratford Plan!

Call Stephanie today for more information on this unique home!

- 3 Bedrooms/2 Bathrooms
- Lot 20 .23 Acres
- Attached 3 Car Garage
- Great Room with Cathedral ceilings
- Stone Corner Fireplace
- Full Basement w/ egress window
- Large Covered Front Porch
- Dry Basement 30-year Warranty
- One Year Builder's Warranty
- Our Exclusive Double-Layer Wall System
- Double Hung Ply Gem Windows (Limited Lifetime Warranty)



All Loos Homes are Energy-Star Tested® & Certified and exceed the Wisconsin Green-Built™ Standards.



Looshomes.com

Home rendering shown above may not reflect the actual home built and shows some optional features. All dimensions are approximate. This information is not guaranteed and is subject to verification by buyer.

