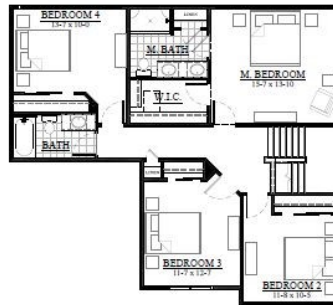


Morse Farms Highlands / Lot 25
413 Midge St., Johnson Creek, WI 53038



FIRST FLOOR LAYOUT



SECOND FLOOR LAYOUT

THE ADAMS — #21MFH25
2,176 Square Feet

\$389,900

READY in February!

Listing Agent:

Mike Trudell

miket@looshomes.com

(262)719-9378

*We welcome other Realtors -
Realtor Co-Broke Offered*



435 Village Walk Lane
Johnson Creek, Wisconsin 53038

Office: 920-699-3787
Office Fax: 920-699-7202

The gorgeous classic exterior styling on this Adams with a 3 car garage will make you feel like it's HOME from first glance! This open flow of the main floor main features a private office/study, a spacious great room with a linear mount fireplace, and kitchen with a huge walk in pantry! Upstairs, the master suite is complete with a large walk in closet, and bath with double vanity. If you need more space, the basement features 3 large windows for natural light, providing the perfect set up for future rec room, bedroom/bath or expansion! Beautiful Morse Farms subdivision is close to parks and offers an easy and convenient commute to Madison or Milwaukee!

Give Mike Trudell a call for more information.

- 4 Bedrooms/2.5 Bathrooms
- Spacious Kitchen w/WI Pantry
- Linear Wall Mount Fireplace in GR
- Main Floor Office/Study
- Master Suite with Dual Vanity & Walk in Closet
- 3 Car Garage
- Partial exposed basement w/ 3 large windows
- Dry Basement 30-year Warranty
- One Year Builder's Warranty
- Double Hung Alliance Windows (Limited Lifetime Warranty)



All Loos Homes are Energy-Star Tested® & Certified and exceed the Wisconsin Green-Built™ Standards.

looshomes.com



Home rendering shown above may not reflect the actual home built and shows some optional features. All dimensions are approximate. This information is not guaranteed and is subject to verification by buyer.

