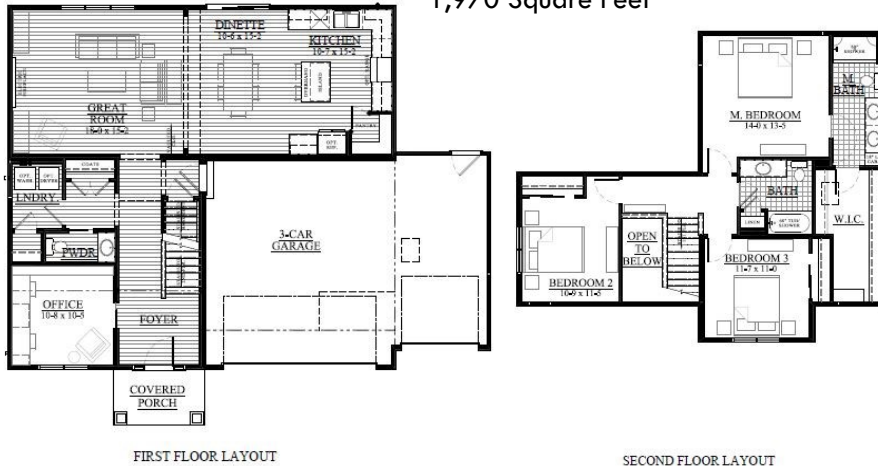


Morgan Station—Lot #47
Woodside Drive, Oconomowoc, WI 53066



The Shelby — 21MS47
 1,970 Square Feet



Call for Details!

AVAILABLE in 2022!

Listing Agent:

Mike Trudell

mket@looshomes.com

(262)719-9378

*We welcome other Realtors -
 2.4% Realtor Co-broke*



435 Village Walk Lane
Johnson Creek, Wisconsin 53038

Office: 920-699-3787
Office Fax: 920-699-7202

Ready for you to make this house your home in 2022, this beautiful Shelby covers ALL the bases! You will love the Vaulted great room with tons of natural light and you will enjoy relaxing in front of the fireplace. The spacious kitchen with island & walk in pantry includes beautiful white cabinets with granite countertops. The master suite offers a large WIC and private bath with dual vanity. A main floor Flex room for office or study space is an added bonus! The 3 car garage has plenty of extra storage space! Beautiful walking trails in this amazing New Morgan Station subdivision and this wonderful house for your family....just might be the one you have been waiting for!

Give Mike Trudell a call for more information

- 3 Bedrooms/2.5 Bathrooms
- Lot 47: .26 Acres
- Main Floor Flex Room
- Pantry and kitchen Island
- 3 Car Garage
- Main Floor laundry
- Double Hung Alliance Windows (Limited Lifetime Warranty)
- One year Builder's Warranty
- 10 Year Structural Warranty
- 30 Year Dry Basement Guarantee
- Our Exclusive Double-Layer Wall System



All Loos Homes are Energy-Star Tested® & Certified and exceed the Wisconsin Green-Built™ Standards.

Looshomes.com



Home rendering shown above may not reflect the actual home built and shows some optional features. All dimensions are approximate. This information is not guaranteed and is subject to verification by buyer.

