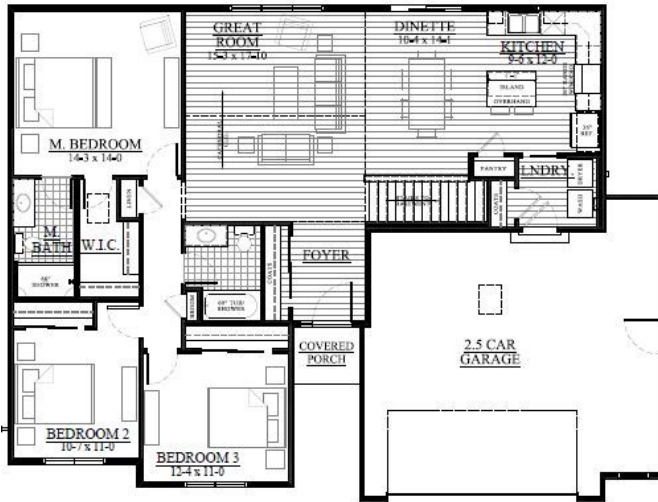


Morse Farms Highlands/ Lot 77
424 Champlain Drive Johnson Creek, WI 53038



FIRST FLOOR LAYOUT

THE Bryant — #22MFH77
1,510 Square Feet

Call for Details!
AVAILABLE IN AUGUST

Listing Agent:
Mike Trudell
MikeT@looshomes.com
(262)719-9378

We welcome other Realtors
2.4% Realtor Co-broke



435 Village Walk Lane
Johnson Creek, Wisconsin 53038

Office: 920-699-3787
Office Fax: 920-699-7202

The Bryant offers features that are perfect for any family. The open kitchen with island and pantry flows nicely into the Dinette and Great Room. The master suite includes a walk in closet and private bathroom. A main floor laundry, upgraded Steel Grey cabinetry, and white trim package throughout, are just a few features of this beautiful home. Walkout basement with patio doors and two large windows has a roughed in full bath, making it very easy to add a home office or add an additional bedroom. Located in Morse Farms Subdivision for an easy commute to Madison or Milwaukee.

Call or Email Mike Trudell for more information.

- Steel Grey Cabinetry
- 3 Bedrooms and 2 Baths
- Lot 77: .27 Acre
- 2.5 Car Garage
- Full Walkout Basement with Patio doors
- 2 full size Basement Windows
- Our Exclusive Double-Layer Wall System
- Double Hung Alliance Windows (Limited Lifetime Warranty)
- 1 Year Builder, 10 Year Structural, & 30 Year Dry Basement Warranties



All Loos Homes are Energy-Star Tested® & Certified and exceed the Wisconsin Green-Built™ Standards.

Looshomes.com



Home rendering shown above may not reflect the actual home built and shows some optional features. All dimensions are approximate. This information is not guaranteed and is subject to verification by buyer.



