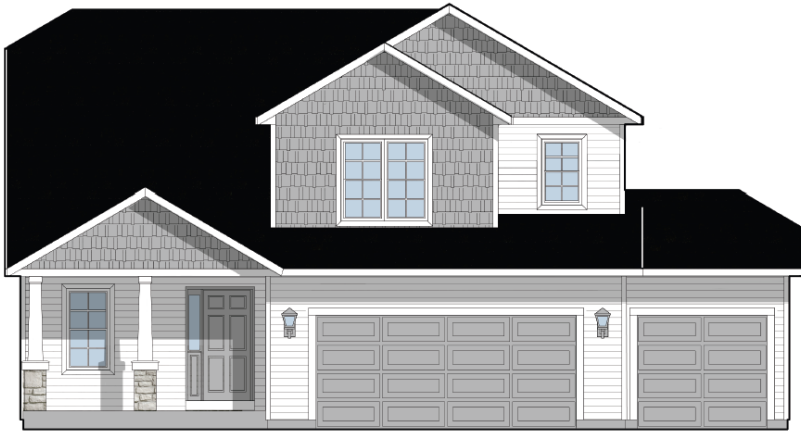


**Conservancy Place - Lot #18**  
**320 E. Washington Avenue, Jefferson, WI 53549**



**\$434,900**

**AVAILABLE IN  
 JULY!!!**

**We welcome other Realtors!**

**2.4% Realtor Co-broke**

**SUMMARY**

Welcome to your dream home in charming Jefferson!

This new construction beauty, the Cedarburg Model, offers an inviting open concept design with a pocket office and fourth bedroom on the second level. Enjoy the kitchen island, walk-in pantry, 3-car garage and the convenience of a Master suite with a Walk-in Closet. This home layout features second floor laundry for your ease and comfort. The front elevation is extremely inviting with its columns and features! Egress window in the basement for future expansion. Don't miss out on this opportunity to call this beautiful house your new forever home! Please Call/Text/Email Deanne Welper for more information, see contact information below!

**The Cedarburg — #24CP18**

**1,900 Square Feet**

**.21 Acre Lot**

**WHY CHOOSE LOOS**

- ◆ Steel Grey Cabinetry
- ◆ Stone/ Shake on front elevation
- ◆ 4 Bedrooms and 2.5 Baths
- ◆ Two-Story Home
- ◆ 1,900 Sq Ft
- ◆ Lot 18: .21 Acre
- ◆ Open main floor plan
- ◆ Pocket Office
- ◆ Kitchen Island
- ◆ Our Exclusive Double-Layer Wall System
- ◆ Double Hung Alliance Windows (Limited Lifetime Warranty)
- ◆ 1 Year Builder, 10 Year Structural, & 30 Year Dry Basement Warranties

**Call/Text/Email Listing Agent:**

**DEANNE WELPER**



All Loos Homes are Focus on Energy Tested & Certified and exceed the Wisconsin Green-Built™ Standards!



**(262) 352-1654 or Deanne@looshomes.com**

Home rendering shown above may not reflect the actual home built and shows some optional features.