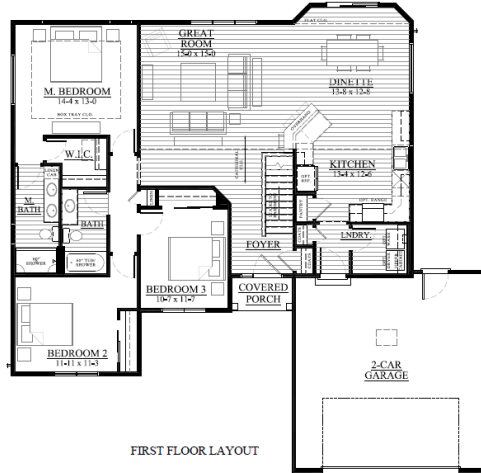


Morse Farms Highland - Lot #9
432 Midge Street, Johnson Creek, WI 53038



\$ TBD

**AVAILABLE IN
AUGUST!!**

We welcome other Realtors!

2.4% Realtor Co-broke

The Baymont — #24MFH9

1,649 Square Feet

.32 Acre Lot

WHY CHOOSE LOOS

- ◆ Steel Gray Cabinetry
- ◆ Quartz Countertops
- ◆ Master Tray Ceiling
- ◆ 3 Bedrooms and 2 Baths
- ◆ 1,649 Sq Ft
- ◆ Lot 9: .32 Acre
- ◆ 2 Car Garage
- ◆ Cathedral Ceilings throughout main living area
- ◆ Our Exclusive Double-Layer Wall System
- ◆ Double Hung Alliance Windows (Limited Lifetime Warranty)
- ◆ 1 Year Builder, 10 Year Structural, & 30 Year Dry Basement Warranties

SUMMARY

The Baymont offers features and amenities that are perfect for any family. The front foyer leads to the open concept main living area with cathedral ceilings. The kitchen is a chef's dream with peninsula and Quartz Kitchen countertops and Steel Gray Cabinets. The master suite includes a WIC and private bathroom. A 2 car garage and a partially exposed basement with 2 windows for your future expansion ideas. Exterior stone on the front of this home, vinyl shake details and window grids add to the curb appeal. Come enjoy Morse Farms Highland in Johnson Creek, the midway point between Madison and Milwaukee! Please Call/Text/Email Ryan Prellwitz, see contact info below!



All Loos Homes are Focus on Energy Tested & Certified and exceed the Wisconsin Green-Built™ Standards!

Call/Text/Email Listing Agent:

RYAN PRELLWITZ



(715) 661-0014 or Ryan@looshomes.com

Home rendering shown above may not reflect the actual home built and shows some optional features.