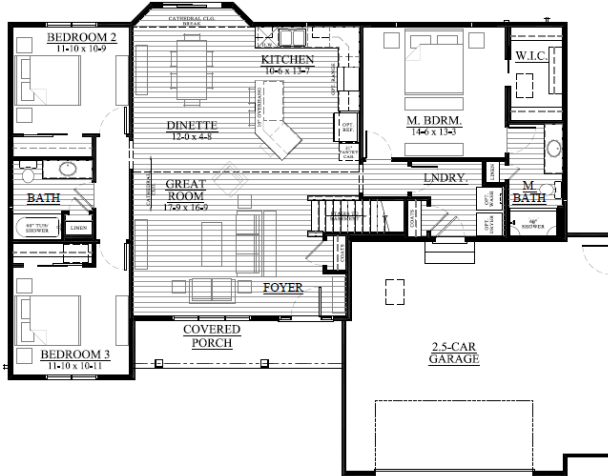


Grandview Heights - Lot #189
1413 Beacon Drive, Watertown, WI 53098



\$ TBD

**AVAILABLE IN
OCTOBER!!**

We welcome other Realtors!

2.4% Realtor Co-broke

The Washburn — #24GH189

1,615 Square Feet

.27 Acre Lot

WHY CHOOSE LOOS

- ◆ Boardwalk Cabinetry
- ◆ Split Ranch
- ◆ 3 Bedrooms and 2 Baths
- ◆ 1,615 Sq Ft
- ◆ Lot 189: .27 Acre
- ◆ 2.5 Car Garage
- ◆ Cathedral Ceilings
- ◆ Full Walk-Out Basement
- ◆ Our Exclusive Double-Layer Wall System
- ◆ Double Hung Alliance Windows (Limited Lifetime Warranty)
- ◆ 1 Year Builder, 10 Year Structural, & 30 Year Dry Basement Warranties

SUMMARY

Discover the perfect blend of comfort and convenience with this new ranch-style construction home in the desirable Grandview Heights Subdivision. Enjoy the spaciousness of a split ranch coupled with the practicality of a 2.5-car garage. Inside, be greeted by the elegance of Cathedral ceilings and ample countertop and cabinet space. A luxurious Master Bedroom with a Walk-in closet with a private Master Bathroom awaits you. The stone-adorned front elevation adds character, and the location provides an easy commute to both Madison and Milwaukee. Your dream home awaits! Please Call/Text/Email Ryan Prellwitz, see contact info below!



All Loos Homes are Focus on Energy Tested & Certified and exceed the Wisconsin Green-Built™ Standards!

Call/Text/Email Listing Agent:

RYAN PRELLWITZ



(715) 661-0014 or Ryan@looshomes.com

Home rendering shown above may not reflect the actual home built and shows some optional features.