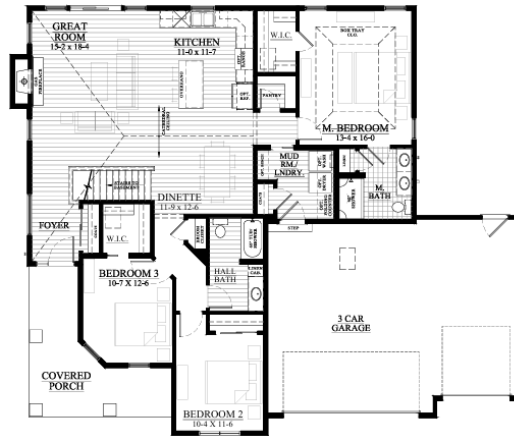


Savannah Parkway - Lot #90
148 Hidden Valley Trail, Deerfield, WI 53531



\$TBD

**AVAILABLE IN
DECEMBER!**

We welcome other Realtors!

2.4% Realtor Co-broke

The Stratford — #25SP90

1,640 Square Feet

.29 Acre Lot

WHY CHOOSE LOOS

- ◆ Our Exclusive Double-Layer Wall System
- ◆ Double Hung Alliance Windows (Limited Lifetime Warranty)
- ◆ 1 Year Builder, 10 Year Structural, & 30 Year Dry Basement Warranties
- ◆ Quartz Countertops
- ◆ LVP Flooring in Main Living Areas
- ◆ Gas Fireplace
- ◆ High Ceilings
- ◆ 3 Bedrooms and 2 Baths
- ◆ 1,640 Sq Ft
- ◆ Lot 90: .29 Acre
- ◆ 3 Car Garage

Call/Text/Email Listing Agent:

RYAN PRELLWITZ



SUMMARY

Discover the perfect blend of comfort and style at this beautiful Stratford model in Deerfield! This beautifully designed 3-bedroom, 2-bath home offers 1,640 square feet of open living space with high ceilings and luxury vinyl plank flooring in the main living areas.

Enjoy the warmth of a gas fireplace and the elegance of quartz countertops throughout. Situated on Lot 90, a spacious 0.29-acre homesite, this home also features a 3-car garage—ideal for extra storage or hobbies. Don't miss your chance to call this exceptional home yours! Call/Text/Email Ryan Prellwitz for more information. See contact info below!

All Loos Homes are Focus on Energy Tested & Certified and exceed the Wisconsin Green-Built™ Standards!



(715) 661-0014 or Ryan@looshomes.com

Home rendering shown above may not reflect the actual home built and shows some optional features.
 All dimensions are approximate. This information is not guaranteed and is subject to verification by buyer.