

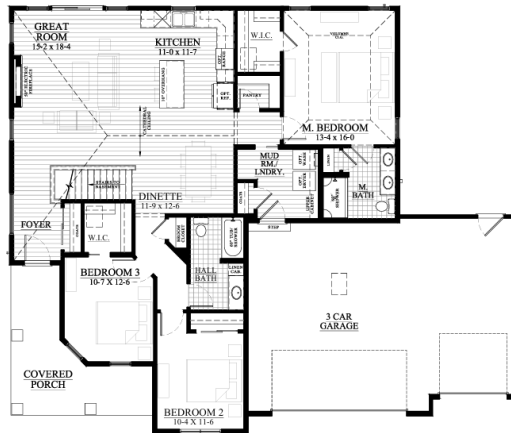
# Jannah Village - Lot #43

## 5825 Bridle Way, Madison, WI 53718



**\$554,900**

**AVAILABLE IN  
APRIL!!**



**We welcome other Realtors!**

**2.4% Realtor Co-broke**

### The Stratford — #25JV43

1,653 Square Feet

.26 Acre Lot

## WHY CHOOSE LOOS

- ◆ Quartz Countertops in Kitchen
- ◆ Electric Fireplace
- ◆ LVP Flooring in Main Living Areas
- ◆ LVT Bathrooms
- ◆ Upgraded Lighting Package
- ◆ 3 Bedrooms and 2 Baths
- ◆ 1,653 Sq Ft
- ◆ Lot 43: .26 Acre
- ◆ 3 Car Garage
- ◆ Our Exclusive Double-Layer Wall System
- ◆ Double Hung Alliance Windows (Limited Lifetime Warranty)
- ◆ 1 Year Builder, 10 Year Structural, & 30 Year Dry Basement Warranties

Call/Text/Email Listing Agent:

**RYAN PRELLWITZ**



## SUMMARY

Discover the perfect blend of style, comfort, and functionality in the brand-new Stratford model home in Jannah Village. This thoughtfully designed 1,653 sq ft ranch-style home features 3 bedrooms and 2 bathrooms on a .26-acre lot. The kitchen is a standout with quartz countertops and an upgraded lighting package, creating a bright and welcoming space. Enjoy cozy evenings by the electric fireplace and the durability of LVP flooring in the main living areas, paired with LVT flooring in the bathrooms. A spacious 3-car garage adds extra convenience and storage. With modern finishes and quality craftsmanship throughout, this home offers exceptional comfort and style. Call/Text/Email Ryan Prellwitz for more information. See contact info below!

All Loos Homes are Focus on Energy Tested & Certified and exceed the Wisconsin

Green-Built™ Standards!



**(715) 661-0014 or [Ryan@looshomes.com](mailto:Ryan@looshomes.com)**