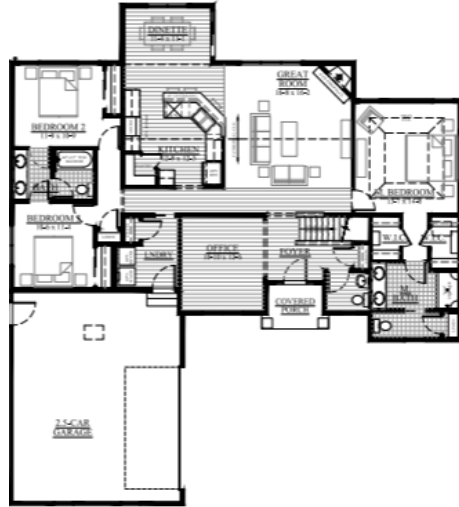


Prairie Creek - Lot #430
1276 Wild Rye Ln, Oconomowoc, WI 53066



\$TBD

**AVAILABLE IN
 SEPTEMBER!!**

We welcome other Realtors!

2.4% Realtor Co-broke

SUMMARY

Introducing the Concord model at Prairie Creek Ridge in Oconomowoc, a beautifully designed ranch-style home offering 1,913 sq ft of modern living. This home features 3 bedrooms and 2 baths, highlighted by high ceilings, a cozy gas fireplace, and durable LVP flooring throughout the main living areas with LVT in the bathrooms. The kitchen stands out with elegant quartz countertops, perfect for both everyday living and entertaining. Situated on Lot 430, a .24 acre homesite, this home also includes a spacious 2.5 car garage for added convenience and storage. Call/Text/Email Ryan Prellwitz, see information below!

The Concord — #26PCR430

1,913 Square Feet

.24 Acre Lot

WHY CHOOSE LOOS

- ◆ Our Exclusive Double-Layer Wall System
- ◆ Double Hung Alliance Windows (Limited Lifetime Warranty)
- ◆ 1 Year Builder, 10 Year Structural, & 30 Year Dry Basement Warranties
- ◆ Quartz Countertops
- ◆ High Ceilings
- ◆ Gas Fireplace
- ◆ LVP Flooring in Main Living Areas, LVT Bathrooms
- ◆ 3 Bedrooms and 2 Baths
- ◆ 1,913 Sq Ft
- ◆ Lot 430: .24 Acre
- ◆ 2.5 Car Garage

Call/Text/Email Listing Agent:

RYAN PRELLWITZ



All Loos Homes are Focus on Energy Tested & Certified and exceed the Wisconsin Green-Built™ Standards!



(715) 661-0014 or Ryan@looshomes.com

Home rendering shown above may not reflect the actual home built and shows some optional features.