

Savannah Parkway - Lot #124
232 W Nelson St, Deerfield, WI 53531

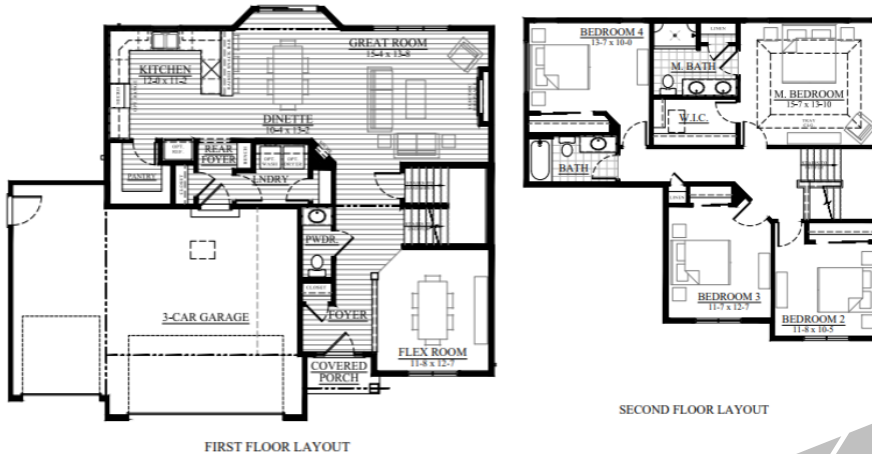


\$TBD

**AVAILABLE IN
 SEPTEMBER!!**

We welcome other Realtors!

2.4% Realtor Co-broke



The Adams — #26SP124

2,172 Square Feet

.22 Acre Lot

WHY CHOOSE LOOS

- ◆ Quartz Countertops
- ◆ LVP Flooring in Main Living Areas
- ◆ LVT Bathrooms
- ◆ 4 Bedrooms and 2.5 Baths
- ◆ 2,172 Sq Ft
- ◆ Lot 124: .22 Acre
- ◆ 3-Car Garage
- ◆ Electric Fireplace
- ◆ Upgraded Finishes
- ◆ Our Exclusive Double-Layer Wall System
- ◆ Double Hung Alliance Windows (Limited Lifetime Warranty)
- ◆ 1 Year Builder, 10 Year Structural, & 30 Year Dry Basement Warranties

Call/Text/Email Listing Agent:

RYAN PRELLWITZ



SUMMARY

Discover this stunning Adams model home in the Savannah Parkway community of Deerfield—a thoughtfully designed 4-bedroom, 2.5-bath home offering 2,172 square feet of stylish, functional living space. Situated on a spacious .22-acre lot, this home features a 3-car garage, upgraded finishes throughout, and an electric fireplace. Enjoy modern touches like quartz countertops, durable LVP flooring in the main living areas, and LVT in the bathrooms, combining beauty with everyday practicality. This move-in ready home blends comfort, quality, and design—making it the perfect place to start your next chapter.

Please Call/Text/Email Ryan Prellwitz for more information on this beautiful home, see contact info below!



All Loos Homes are Focus on Energy Tested & Certified and exceed the Wisconsin Green-Built™ Standards!



(715) 661-0014 or Ryan@looshomes.com

Home rendering shown above may not reflect the actual home built, may show optional features, or may be AI-generated for conceptual purposes. All dimensions are approximate. This information is not guaranteed and is subject to verification by buyer.