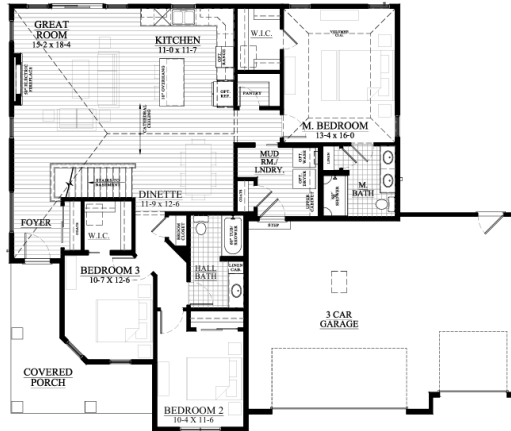


**Jannah Village - Lot #43**  
**5825 Bridle Way, Madison, WI 53718**



**\$539,900**

**AVAILABLE NOW!!**



**We welcome other Realtors!**

**2.4% Realtor Co-broke**

**The Stratford — #25JV43**

**1,653 Square Feet**

**.26 Acre Lot**

**WHY CHOOSE LOOS**

- ◆ Quartz Countertops in Kitchen
- ◆ Electric Fireplace
- ◆ LVP Flooring in Main Living Areas
- ◆ LVT Bathrooms
- ◆ Upgraded Lighting Package
- ◆ 3 Bedrooms and 2 Baths
- ◆ 1,653 Sq Ft
- ◆ Lot 43: .26 Acre
- ◆ 3 Car Garage
- ◆ Our Exclusive Double-Layer Wall System
- ◆ Double Hung Alliance Windows (Limited Lifetime Warranty)
- ◆ 1 Year Builder, 10 Year Structural, & 30 Year Dry Basement Warranties

**Call/Text/Email Listing Agent:**  
**RYAN PRELLWITZ**

**SUMMARY**

Discover the perfect blend of style, comfort, and functionality in the brand-new Stratford model home in Jannah Village. This thoughtfully designed 1,653 sq ft ranch-style home features 3 bedrooms and 2 bathrooms on a .26-acre lot. The kitchen is a standout with quartz countertops and an upgraded lighting package, creating a bright and welcoming space. Enjoy cozy evenings by the electric fireplace and the durability of LVP flooring in the main living areas, paired with LVT flooring in the bathrooms. A spacious 3-car garage adds extra convenience and storage. With modern finishes and quality craftsmanship throughout, this home offers exceptional comfort and style. Call/Text/Email Ryan Prellwitz for more information. See contact info below!



All Loos Homes are Focus on Energy Tested & Certified and exceed the Wisconsin Green-Built™ Standards!



**(715) 661-0014 or Ryan@looshomes.com**

Home rendering shown above may not reflect the actual home built and shows some optional features. All dimensions are approximate. This information is not guaranteed and is subject to verification by buyer.